

# 2021

Transition & Change

# Annual Report & Residential Recycling Report



**Cuyahoga County**  
SOLID WASTE DISTRICT

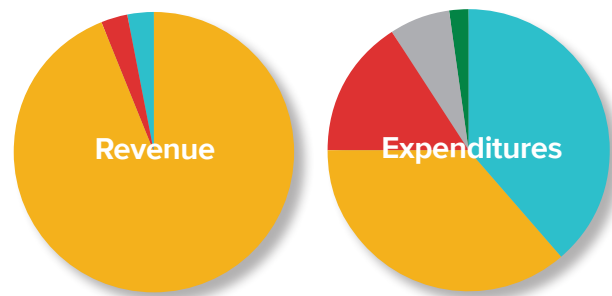
# 2021: Transition & Change

Year two of the pandemic has required us all to adjust reluctantly to our new "normal" – and to resign that things will never be quite the same. During 2021, the Solid Waste District responded to our new normal by making continued adjustments to our programming to meet the evolving needs of Cuyahoga County communities and businesses.

In fact, we took advantage of our new normal to expand Zoom based educational programming for our residents and businesses. The District's website welcomed an increase of new visitors to the site by 86%. We also broadened the number of grants and the funds provided to communities to assist them with residential recycling opportunities and outreach/ education efforts.

The new normal created an increased interest in backyard composting, so the District offered additional opportunities for the public to purchase compost bins and participate in associated seminars or classes. Increased volumes of televisions, campaign signs and holiday lights were recycled by the District during 2021.

For 2022, the District has committed to further changes such as offering new recycling programs, new remote access educational programming, and implementing improvements to our website. We exist to serve you – residents, communities, businesses, and organizations – and want your input on how we can best address your changing needs. Please keep in touch and stay healthy.

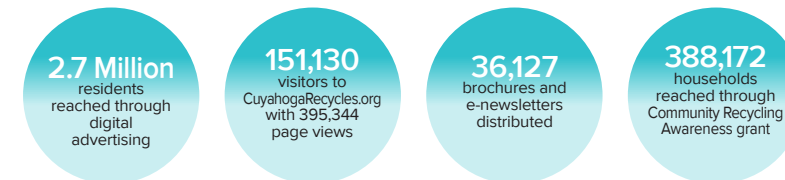


## 2021 Financial Report

<b>Revenue</b>	<b>\$2,183,944</b>
● Generation Fees	\$2,047,410
● Grants	\$75,000
● Miscellaneous Revenue	\$61,534
<b>Expenditures</b>	<b>\$1,985,711</b>
● Programs & Services	\$774,152
● Personnel	\$708,838
● Operating Expenses	\$330,428
● Health Department Funding	\$139,589
● Indirect County Fees	\$32,705

# 2021 Year End Stats

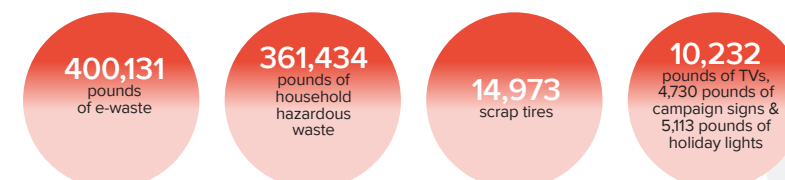
## Recycling Outreach



## Education & Technical Support



## Special Waste Collections



# 2021 Residential Recycling Report

The chart below shows the percentage of each community's waste stream that was recycled and composted in 2021. These add up to the total recycling rate for each community.

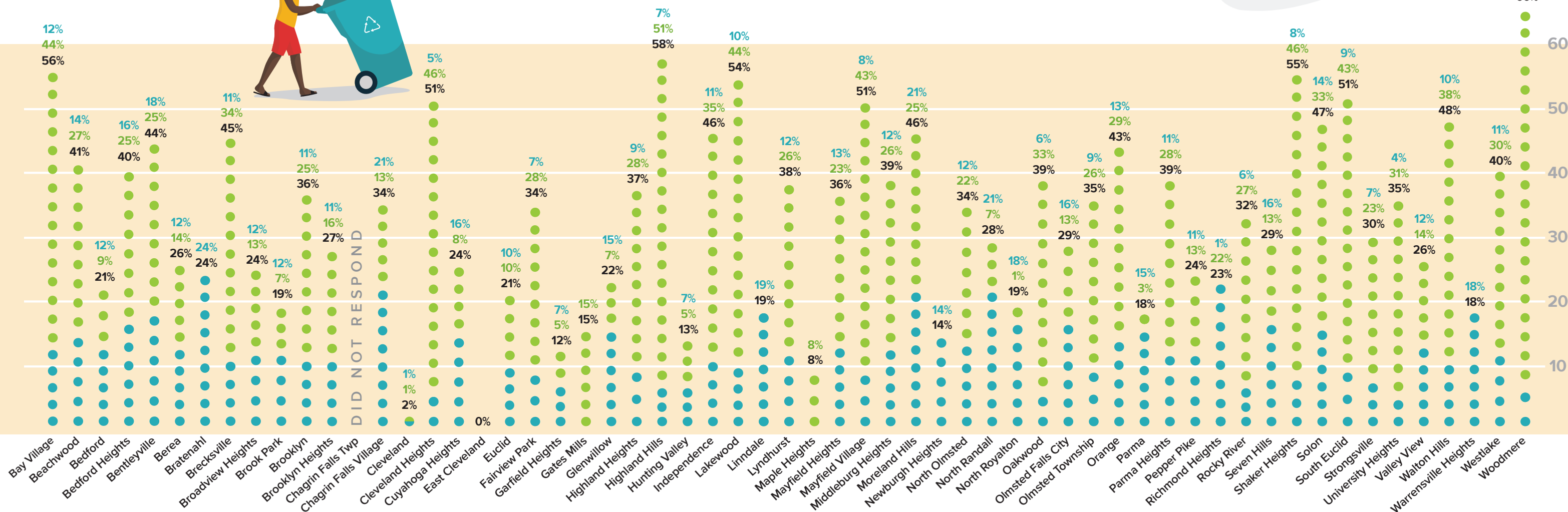
**% Recycled** The percentage of the community's total residential waste collected for recycling. This figure includes cans, cartons, glass, paper and boxes, plastic bottles and jugs, scrap metal, appliances, computers, household hazardous wastes and scrap tires collected through curbside, drop-off and other collection programs.

**% Composted** The percentage of a community's total residential waste that was collected for composting or mulching. Includes yard waste leaves, grass, brush and wood waste.



\* Percentages may not add up to the total due to rounding.

● ● ● % Recycled  
● ● ● % Composted  
**Total %**





# 2021 Residential Recycling Report

**Key** This data reflects materials collected through each community's residential waste collection, recycling and yard waste management programs. It excludes materials from commercial buildings, retail stores, restaurants and apartment complexes that are not served by the community's waste collection program.

**2021 Tons Landfilled Solid Waste =** Consists of non-recycled trash that is taken to a landfill for disposal.

**2021 Tons Recycled Recyclables =** Consists of cans, cartons, glass, paper and boxes, plastic bottles and jugs, scrap metal, appliances, computers, household hazardous waste and scrap tires collected for recycling.

**2021 Tons Recycled Organics =** Consists of yard waste, leaves, grass, brush and wood collected for mulching and/or composting.

**2021 Total Recycling Rate =** The percentage of residential waste diverted from landfills through the community's reuse, recycling and composting programs. The recycling rate is calculated by dividing the total tons recycled (organics + recyclables) by the total tons of waste generated (tons landfilled + tons recycled).

**2020 Total Recycling Rate** Provided for comparison purposes.

## Our Staff

- Beth Biggins-Ramer** *Executive Director*
- Jessica Fenos** *Assistant Director*
- Carin Miller** *Education Specialist*
- Maria Ortiz** *Business Administrator*
- Doreen Schreiber** *Business Recycling Specialist*
- Cristie Snyder** *Communications Specialist*
- Matt Walters** *Recycling Programs Coordinator*

## Our Board of Directors

- Michael Dever**  
*Director, Cuyahoga County Public Works*
- Mike Foley**  
*Director of Sustainability, Cuyahoga County*
- Sunny Simon**  
*Council Member, Cuyahoga County Council*

Community	2021 Landfilled Solid Waste	2021 Tons Recycled Recyclables	2021 Tons Recycled Organics	2021 Total Recycling Rate	2020 Total Recycling Rate
Bay Village	4,805.52	1,371.01	4,806.19	56.24%	47.97%
Beachwood	3,736.78	877.26	1,733.04	41.13%	39.73%
Bedford	4,517.64	684.91	522.38	21.09%	23.73%
Bedford Heights	2,645.15	691.51	1,102.00	40.41%	40.54%
Bentleyville	381.10	124.98	172.00	43.80%	19.87%
Berea	7,829.00	1,319.98	1,428.00	25.98%	26.43%
Bratenahl	520.98	165.26	0.00	24%	0.00%
Brecksville	5,945.47	1,186.39	3,717.76	45.20%	46.37%
Broadview Heights	7,979.72	1,229.51	1,331.93	24.30%	26.46%
Brook Park	9,592.77	1,427.37	774.50	18.67%	17.58%
Brooklyn	4,266.31	696.64	1,657.59	35.56%	44.13%
Brooklyn Heights	759.06	118.93	165.18	27.24%	32.02%
Chagrin Falls Township	D I D	N O T	R E S P O	N D	50.00%
Chagrin Falls Village	1,569.89	490.41	318.00	33.99%	35.34%
Cleveland	157,094.17	2,350.70	1,117.32	2.16%	2.56%
Cleveland Heights	16,316.26	1,626.63	15,232.90	50.82%	49.99%
Cuyahoga Heights	304.56	64.61	33.00	24.27%	21.81%
East Cleveland	5,442.84	18.47	0.00	0.34%	1.37%
Euclid	17,866.73	2,353.69	2,305.77	20.68%	25.98%
Fairview Park	6,976.67	731.77	2,925.15	34.39%	30.82%
Garfield Heights	12,724.30	1,044.99	667.74	11.86%	26.82%
Gates Mills	1,111.92	190.88	0.00	14.65%	18.37%
Glenwillow	502.58	94.64	44.92	21.73%	27.65%
Highland Heights	3,919.57	542.04	1,722.40	36.62%	40.72%
Highland Hills	302.57	50.56	370.31	58.18%	57.59%
Hunting Valley	648.00	54.09	40.00	12.68%	13.78%
Independence	4,038.46	834.85	2,587.52	45.87%	51.30%
Lakewood	17,554.71	3,881.73	16,745.00	54.02%	50.03%
Linndale	55.85	13.27	0.00	19.20%	22.37%
Lyndhurst	6,142.00	1,220.15	2,600.41	38.35%	39.18%
Maple Heights	10,370.35	885.63	0.00	7.87%	5.81%
Mayfield Heights	4,804.33	980.40	1,723.53	36.01%	40.36%
Mayfield Village	1,453.09	243.32	1,290.50	51.35%	47.96%
Middleburg Heights	4,299.72	845.42	1,851.00	38.54%	41.79%
Moreland Hills	1,327.79	515.93	599.25	45.65%	37.10%
Newburgh Heights	940.00	153.06	5.00	14.39%	14.52%
North Olmsted	12,657.58	2,324.82	4,279.86	34.29%	33.79%
North Randall	105.50	30.09	10.17	27.62%	23.85%
North Royalton	11,620.43	2,563.75	86.00	18.57%	20.45%
Oakwood	1,298.00	136.97	701.10	39.23%	35.73%
Olmsted Falls City	4,660.57	1,015.85	842.01	28.50%	31.83%
Olmsted Township	4,626.11	654.10	1,876.19	35.36%	37.29%
Orange	1,300.16	301.96	661.94	42.57%	35.64%
Parma	38,606.42	7,071.21	1,623.40	18.38%	24.11%
Parma Heights	5,929.11	1,105.51	2,763.00	39.48%	46.97%
Pepper Pike	2,868.00	432.76	496.59	24.47%	26.59%
Richmond Heights	4,032.89	48.32	1,124.83	22.53%	19.01%
Rocky River	8,888.00	725.64	3,480.00	32.12%	30.59%
Seven Hills	5,624.99	1,241.38	1,003.75	28.53%	34.00%
Shaker Heights	8,754.06	1,558.00	8,935.20	54.52%	56.19%
Solon	7,872.00	2,123.69	4,828.32	46.90%	50.66%
South Euclid	8,788.84	1,579.05	7,687.00	51.32%	47.43%
Strongsville	22,195.32	2,167.35	7,249.01	29.79%	30.42%
University Heights	4,945.00	328.38	2,378.50	35.38%	28.53%
Valley View	980.52	156.50	186.02	25.89%	10.99%
Walton Hills	993.10	188.83	720.00	47.78%	49.15%
Warrensville Heights	3,206.57	706.07	12.00	18.30%	12.88%
Westlake	13,183.13	2,362.89	6,595.22	40.46%	40.54%
Woodmere	144.82	19.17	255.80	65.50%	63.39%
<b>Community Totals</b>	<b>502,026.98</b>	<b>57,923.30</b>	<b>127,386.20</b>	<b>26.96%</b>	<b>28.40%</b>



**Cuyahoga County**  
SOLID WASTE DISTRICT  
CuyahogaRecycles.org

4750 East 131 Street, Garfield Heights, OH 44105  
(216) 443-3749 [www.cuyahogarecycles.org](http://www.cuyahogarecycles.org)

