

# 2022 Annual Report & Residential Recycling Report

Forward Movement





## 2022: Forward Movement

The Greek philosopher Heraclitus is credited with the idea that “the only constant in life is change.” We saw businesses launch hybrid working environments; an increase of in-person shopping and dining; a continuation of online ordering of goods; and an extension of activities associated with being outdoors and in nature. All of this impacted how we reduce, reuse, recycle, and manage our food and yard waste.

The District introduced an expanded version of its website CuyahogaRecycles.org which included an expanded list of materials that can be searched for under the “What Do I Do With” function. Additionally, this function was outfitted with a geo-locator, so residents and businesses can locate their closest location for re-purposing or recycling an item.

We intensified our outreach and communications with residents and businesses through increased social media posts and streaming TV and cable messaging. The return of in-person

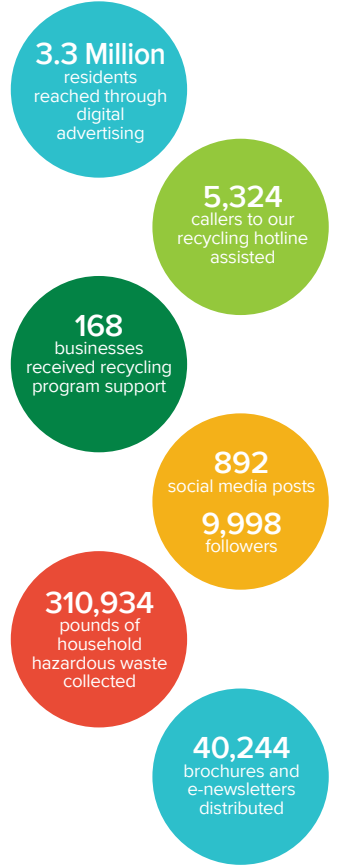
presentations and tabling events allowed us to meet people where they live and work. District grants totaling \$225,714 assisted over 293,000 households, and 11 organizations increase their capacity to reduce, reuse, recycle or compost.

The District launched Second Saturdays, opening its vestibule on the second Saturday of the month for special recycling drop-offs and compost bin sales. The number of televisions, fluorescent bulbs, computers, and holiday lights managed through the District’s Special Waste Convenience Center in Garfield Heights surpassed that of previous years. Media storage (VHS/ Cassette/Floppy Disk/CD/DVD and their cases) and small propane tank collection programs were introduced in 2022.

As we move into 2023, we plan to see you more at events where you live, work and play. We are always here ready to support sustainable materials management and reduce the environmental impact of waste.

*Beth Biggins-Romer*  
Executive Director

## 2022 Key Stats



## 2022 Financial Report

<b>Revenue</b>	<b>\$2,135,221.00</b>
Generation Fees	\$2,045,524.00
Grants	\$75,000.00
Miscellaneous Revenue	\$14,697.00
<b>Expenditures</b>	<b>\$1,943,346.00</b>
Indirect County Fees	\$20,509.00
Health Funding	\$207,392.00
Operating Expenses	\$277,600.00
Personnel	\$670,449.00
Programs & Services	\$767,396.00



## 2022 Residential Recycling Report

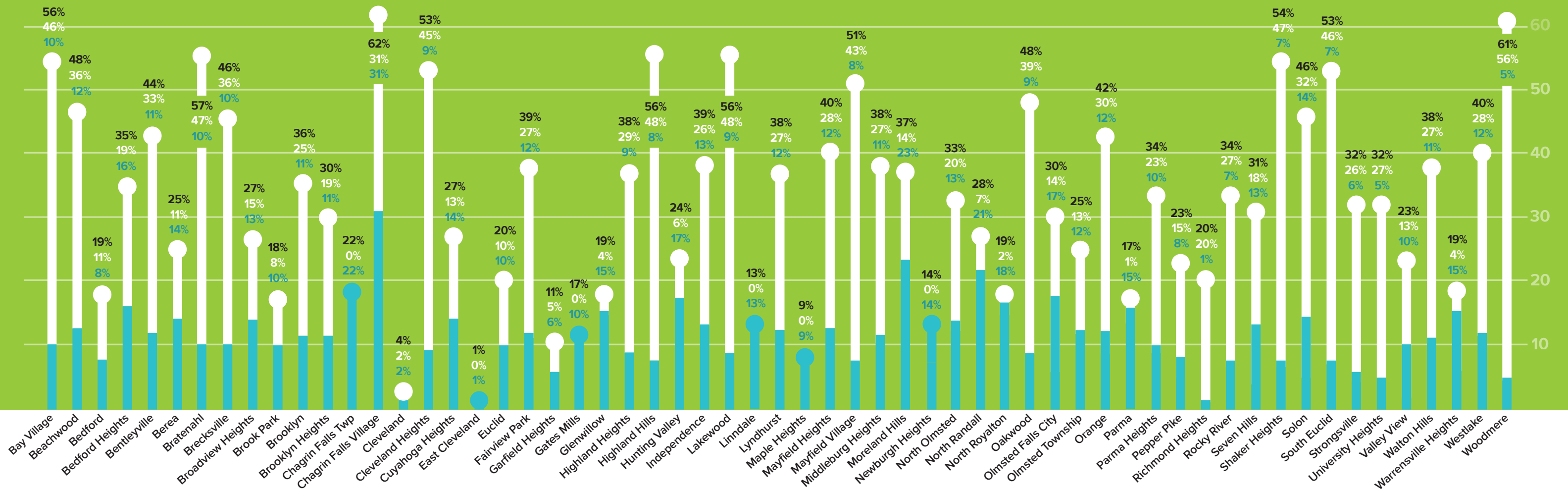
The chart below shows the percentage of each community’s waste stream that was recycled and composted in 2022. These add up to the total recycling rate for each community.

**% Recycled** The percentage of the community’s total residential waste collected for recycling. This figure includes cans, cartons, glass, paper and boxes, plastic bottles and jugs, scrap metal, appliances, computers, household hazardous wastes and scrap tires collected through curbside, drop-off and other collection programs.

**% Composted** The percentage of a community’s total residential waste that was collected for composting or mulching. Includes food waste, yard waste, leaves, grass, brush and wood waste.

\* Percentages may not add up to the total due to rounding.

**Total % Shown in Black**  
 % Composted   
  % Recycled





## 2022 Residential Recycling Report

**Key** This data reflects materials collected through each community's residential waste collection, recycling and yard waste management programs. It excludes materials from commercial buildings, retail stores, restaurants and apartment complexes that are not served by the community's waste collection program.

**2022 Tons Landfilled Solid Waste** = Consists of non-recycled trash that is taken to a landfill for disposal.

**2022 Tons Recycled Recyclables** = Consists of cans, cartons, glass, paper and boxes, plastic bottles and jugs, scrap metal, appliances, computers, household hazardous waste and scrap tires collected for recycling.

**2022 Tons Recycled Organics** = Consists of food waste, yard waste, leaves, grass, brush and wood collected for mulching and/or composting.

**2022 Total Recycling Rate** = The percentage of residential waste diverted from landfills through the community's reuse, recycling and composting programs. The recycling rate is calculated by dividing the total tons recycled (organics + recyclables) by the total tons of waste generated (tons landfilled + tons recycled).

**2021 Total Recycling Rate** Provided for comparison purposes.

Community	2022 Landfilled Solid Waste	2022 Tons Recycled Recyclables	2022 Tons Recycled Organics	2022 Total Recycling Rate	2021 Total Recycling Rate
Bay Village	5,612.11	1,252.14	5,902.79	56.04%	56.24%
Beachwood	3,360.02	776.66	2,351.60	48.21%	41.13%
Bedford	4,217.38	419.89	573.30	19.06%	21.09%
Bedford Heights	2,540.34	613.70	758.61	35.07%	40.41%
Bentleyville	361.50	69.01	216.26	44.11%	43.80%
Berea	7,297.74	1,329.32	1,054.00	24.62%	25.98%
Bratenahl	482.98	112.52	523.00	56.82%	24.08%
Brecksville	5,367.39	965.08	3,533.53	45.60%	45.20%
Broadview Heights	7,579.29	1,346.45	1,518.96	27.43%	24.30%
Brook Park	9,275.67	1,099.40	930.83	17.96%	18.67%
Brooklyn	3,751.67	638.64	1,471.92	36.00%	35.56%
Brooklyn Heights	681.03	105.57	180.33	29.57%	27.24%
Chagrin Falls Township	51.48	14.87	0.00	0.22%	N/A
Chagrin Falls Village	436.50	362.69	362.08	62.41%	33.99%
Cleveland	130,390.33	2,977.42	2,120.42	3.76%	2.16%
Cleveland Heights	13,040.65	2,390.32	12,436.27	53.20%	50.82%
Cuyahoga Heights	271.30	53.61	49.21	27.48%	24.27%
East Cleveland	4,846.74	49.05	0.00	1.00%	0.34%
Euclid	16,645.58	2,044.46	2,141.11	20.09%	20.68%
Fairview Park	6,762.72	1,297.06	3,015.04	38.94%	34.39%
Garfield Heights	11,312.25	753.44	580.12	10.55%	11.86%
Gates Mills	903.64	178.24	0.68	16.53%	14.65%
Glenwillow	777.23	141.61	43.26	19.22%	21.73%
Highland Heights	3,933.15	603.94	1,833.33	38.26%	36.62%
Highland Hills	349.30	59.37	382.05	55.83%	58.18%
Hunting Valley	349.91	79.78	28.25	23.59%	41.59%
Independence	3,338.51	711.19	1,448.87	39.28%	45.87%
Lakewood	15,008.30	2,950.33	16,463.33	56.40%	54.02%
Linddale	51.85	7.97	0.00	13.32%	19.20%
Lyndhurst	5,749.01	1,094.41	2,500.33	38.47%	38.35%
Maple Heights	8,760.24	908.41	0.67	9.40%	7.87%
Mayfield Heights	4,735.96	923.34	2,238.17	40.03%	36.01%
Mayfield Village	1,334.48	206.77	1,170.00	50.78%	51.35%
Middleburg Heights	4,155.76	740.86	1,814.00	38.07%	38.54%
Moreland Hills	1,236.60	445.79	276.78	36.88%	45.65%
Newburgh Heights	864.29	138.78	5.00	14.26%	14.39%
North Olmsted	11,230.33	2,176.70	3,425.65	33.28%	34.29%
North Randall	105.24	30.83	10.17	28.04%	27.62%
North Royalton	10,856.09	2,406.80	206.67	19.40%	18.57%
Oakwood	1,067.56	175.52	800.10	47.75%	39.23%
Olmsted Falls City	4,152.71	993.71	807.32	30.25%	28.50%
Olmsted Township	4,578.48	750.32	764.57	24.86%	35.36%
Orange	1,279.91	262.37	671.46	42.18%	42.57%
Parma	36,128.71	6,631.79	522.52	16.53%	18.38%
Parma Heights	5,516.06	864.32	1,948.92	33.78%	39.48%
Pepper Pike	2,756.51	291.72	538.25	23.14%	24.47%
Richmond Heights	3,756.89	24.84	933.38	20.32%	22.53%
Rocky River	8,487.47	891.13	3,556.09	34.38%	32.12%
Seven Hills	5,277.47	996.29	1,423.46	31.44%	28.53%
Shaker Heights	8,525.45	1,247.37	8,567.55	53.52%	54.52%
Solon	7,391.00	1,839.52	4,392.80	45.75%	46.90%
South Euclid	8,207.04	1,164.81	7,976.50	52.69%	51.32%
Strongsville	20,753.28	1,703.24	7,927.41	31.70%	29.79%
University Heights	4,627.36	339.35	1,829.00	31.91%	35.38%
Valley View	891.36	115.25	147.21	22.75%	25.89%
Walton Hills	950.00	173.09	420.43	38.45%	47.78%
Warrensville Heights	2,845.63	514.69	140.63	18.72%	18.30%
Westlake	12,001.00	2,306.06	5,652.67	39.87%	40.46%
Woodmere	165.46	20.38	237.20	60.89%	65.50%
<b>Community Totals</b>	<b>447,383.91</b>	<b>53,782.17</b>	<b>120,824.06</b>	<b>28.07%</b>	<b>26.99%</b>

### Our Staff

- Beth Biggins-Ramer** Executive Director
- Jessica Fenos** Assistant Director
- Carin Miller** Education Specialist
- Maria Ortiz** Business Administrator
- Doreen Schreiber** Business Recycling Specialist
- Cristie Snyder** Communications Specialist
- Matt Walters** Recycling Programs Coordinator

### Our Board of Directors

- Michael Dever**  
Director, Cuyahoga County Public Works
- Valerie Katz**  
Assistant Director, Cuyahoga County Sustainability
- Sunny Simon**  
Council Member, Cuyahoga County Council



**Cuyahoga County**  
SOLID WASTE DISTRICT  
CuyahogaRecycles.org

4750 East 131 Street, Garfield Heights, OH 44105  
(216) 443-3749 [www.cuyahogarecycles.org](http://www.cuyahogarecycles.org)

